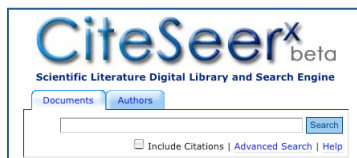




Graduate Studies at
The Intelligent Information Systems Research Laboratory
 College of Information Sciences and Technology
 The Pennsylvania State University, University Park, PA 16802
iis.ist.psu.edu

Core Faculty

C. Lee Giles, giles@ist.psu.edu, Web search, niche search engines, digital libraries.
James Z. Wang, jwang@psu.edu, image tagging/retrieval, analysis of paintings, biomedical informatics.
Prasenjit Mitra, pmitra@ist.psu.edu, databases, ontology, security.



The current research of the Lab covers Internet database design and analysis, mobile Web computing, Web mining and navigation, Web agent, Web tools, large-scale multimedia tagging and retrieval, automatic linguistic indexing of pictures, computerized study of paintings, biomedical informatics, multimedia security, Web and Internet models, Web usage, automatic content analysis and digital libraries, Web search, and niche search engines.

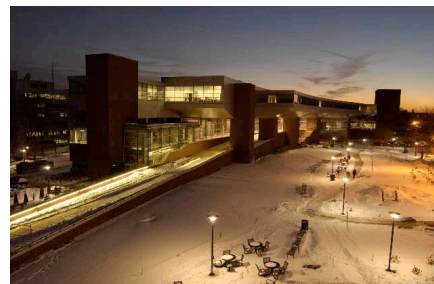
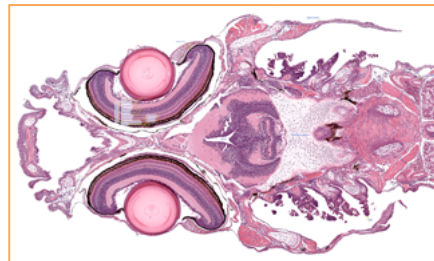
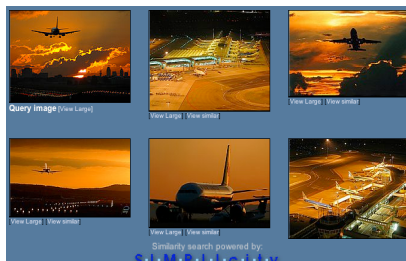
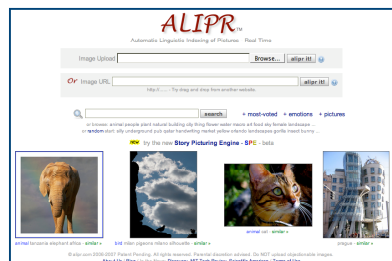
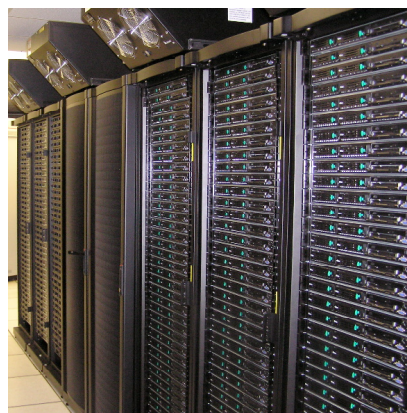
The Lab has access to world-class computing and multimedia imaging facilities, including terabytes of storage space and cluster computers with hundreds of processors.

Research of the Lab has been periodically reported by leading science media, including *Discovery News*, *Scientific American*, *National Public Radio*, *NOVA TV*, and *MIT Technology Review*, as well as mass wired news agencies. Ph.D. alumni of the Lab have been recruited by University of Mississippi, Kodak Research, Microsoft Research, Yahoo! Research, Google, and Facebook after their graduation. It takes between four to six years typically to graduate from the lab.

Representative Projects funded by the US National Science Foundation:

1. CAREER: Machine Learning Based Intelligent Image Annotation
2. CRI: Collaborative: Next Generation CiteSeer
3. Cyberinfrastructure and Research Facilities: Developing Collaboratory Tools to Facilitate Multi-Disciplinary, Multi-Scale Research in Environmental Molecular Sciences

To apply to our PhD program, please go to <http://ist.psu.edu>.



For more information, please visit <http://iis.ist.psu.edu> or email one of the core faculty.